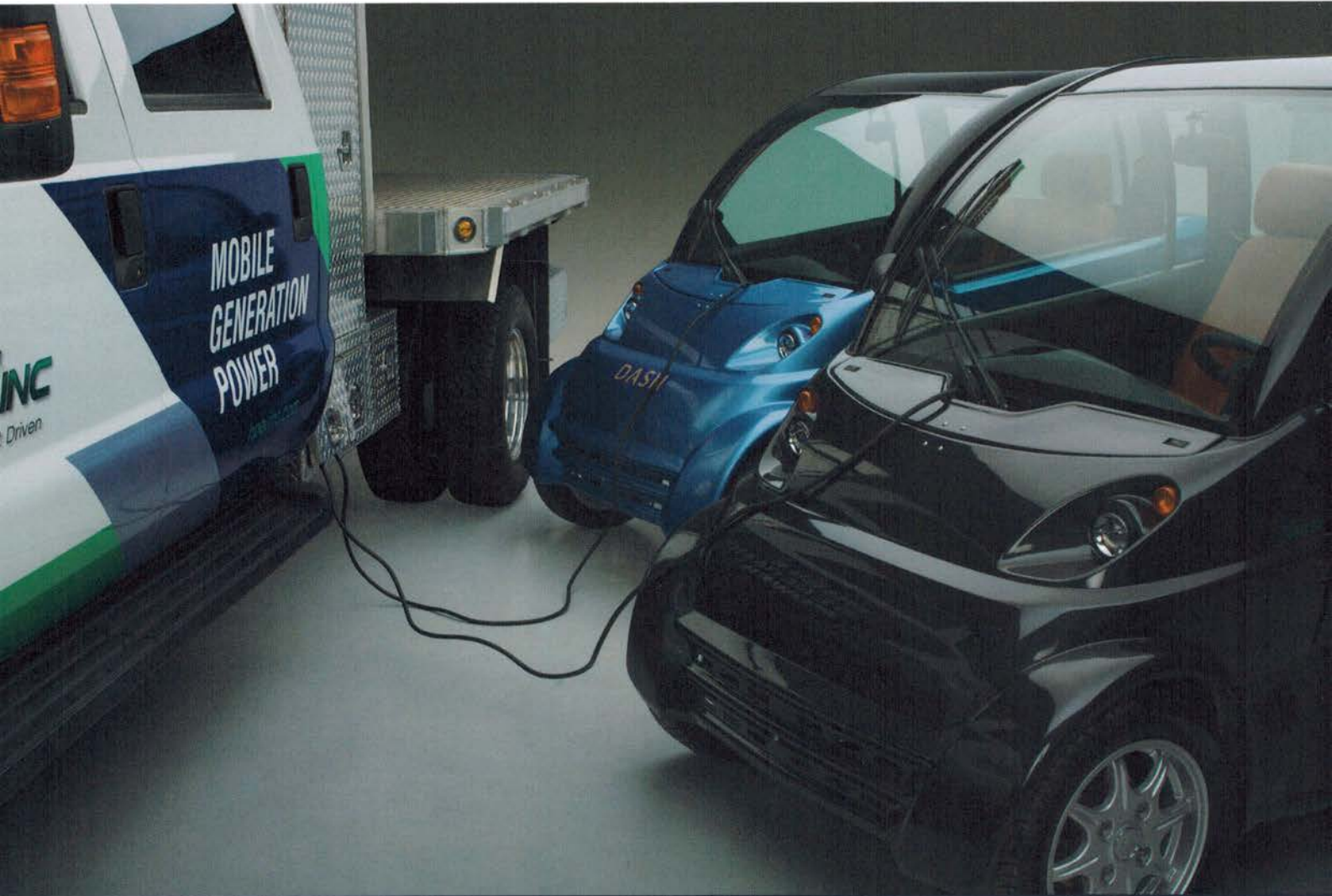




POWER TO GO



INNOVATIONS IN
MOBILE POWER
GENERATION



THE SITUATION

Although the popularity of charging stations is increasing, there are currently not enough accessible stations to service vehicles across the U.S., let alone worldwide. The result: "range anxiety," which currently plagues many electric vehicle owners — regardless of make, model or vehicle size.

THE SOLUTION

HPEV's Level II/CHAdeMO mobile electric vehicle battery charging solution provides the confidence and peace of mind that electric vehicle owners have been seeking. It allows electric vehicles to be charged anytime, anywhere.

Key Features and Benefits:

- Under-chassis implementation
 - Enables vehicles to tow a trailer
- Does not require a tow-behind generator
 - Allows for the transportation of vehicles
- Includes a fully functioning generator panel
- Provides simultaneous charging for six electric vehicles
 - Vehicles include the Innova UEV Dash

As an added option, HPEV'S No-idle system allows vehicles to provide battery-to-battery charging while reducing excessive idling, as well as decreasing fuel and maintenance costs. It's an effective solution made environmentally friendly.



DID YOU KNOW?

The Innova UEV Dash is a high-tech, smart and sustainable urban electric vehicle. When used in conjunction with HPEV's mobile charging solution, it creates a unique, personalized and rewarding experience and makes a big impact on the environment.

Find out more.

HPEV has a better answer in mobile power. A game-changing answer. Contact us today for more information.

ENERGY EFFICIENT.
MARKET DRIVEN.